

fresh

3rd/4th qtr.
Low Pressure - High Performance™
2011



selecting sprinklers

Considering Crops and Soils When Choosing Sprinklers

Excerpts from “Selecting a Sprinkler Irrigation System,” by Tom Scherer

The system capacity (flow rate) needed to adequately irrigate an area is dependent on the:

1. Peak crop water requirements during the growing season
2. Effective crop rooting depth
3. Texture and infiltration rate of the soil
4. The available water-holding capacity of the soil
5. If the water source is a one or more wells, the well or wells’ pumping capacity
6. The State Water Commission permitted pumping rate

This table below shows the system capacity (gpm/acre) needed for the commonly irrigated crops and various soil textures. Determine the dominant soil texture in the field and what type of crops will be grown (the crop rotation), then determine the appropriate system capacity.

For example, for a rotation of potatoes, corn and alfalfa on loamy sand, the table shows that potatoes require 7 gpm/acre, corn 5.9 gpm/acre and alfalfa 5.6 gpm/acre. Select a design system capacity for the crop requiring the largest amount, in this case the potatoes at 7 gpm/acre. If you install a center pivot system covering 130 acres, you would need about 910 gpm for proper design. Note, what you need for proper design and what a well will produce may be different. A sprinkler system must be designed to apply water uniformly without runoff or erosion. The application rate of the sprinkler system must be matched to the

intake rate of the most restrictive soil in the field. If the application rate exceeds the soil intake rate, the water will run off the field or relocate within the field, resulting in over- and under watered areas. The intake rate of the soils in your field can be found in the county soil survey available at your local Natural Resources Conservation Service or Extension office.

Crop	Root Zone Depth (ft)	Coarse Sand and Gravel	Sand	Loamy Sand	Sandy Loam	Fine Sandy Loam	Loam and Silt Loam
Potatoes **	2.0	8.2	7.5	7.0	6.4	6.1	5.7
Dry Beans	2.0	7.9	7.1	6.4	6.1	5.7	5.4
Soy Beans	2.0	7.9	7.1	6.4	6.1	5.7	5.4
Corn	3.0	7.3	6.6	5.9	5.5	5.3	4.9
Sugarbeets	3.0	7.3	6.6	5.9	5.5	5.3	4.9
Small Grains	3.0	7.3	6.6	5.9	5.5	5.3	4.9
Alfalfa	4.0	6.8	5.9	5.6	5.1	5.0	4.5

“Selecting a Sprinkler Irrigation System,” Tom Scherer, Extension Agricultural Engineer, North Dakota State University, January 2010, www.ag.ndsu.edu

** Adjusted for 40 percent depletion of available water

Contact your local dealer to learn how Senninger products can meet your needs.



Dealer Seminars

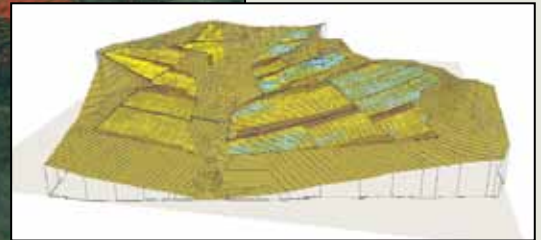
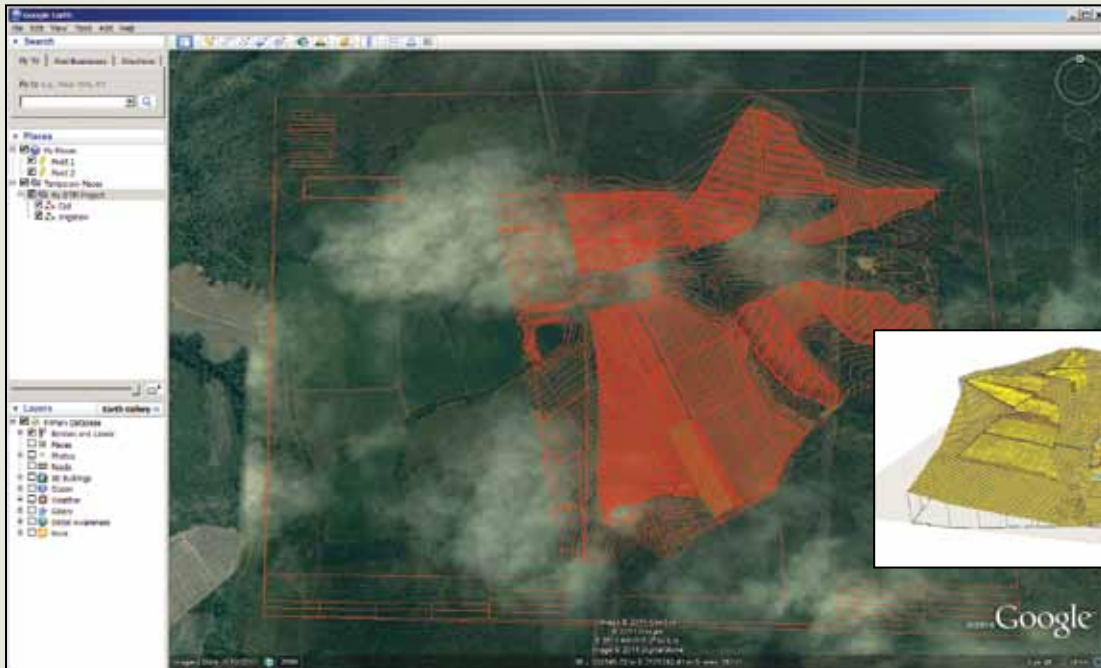
Senninger hosted several dealer seminars the last two weeks in September. Over 70 dealers learned more about the latest products, sprinkler performance, application intensity, pattern integrity, pressure regulation and more. Interacting with one another about specific irrigation issues in their area was a great benefit to many. Plus everyone enjoyed the free samples, literature, and prize drawings. Watch for details about upcoming seminars that may be coming to your area.



Career Day

Several high school students attended a career day at Senninger in October. Events like these allow young people the opportunities to hear about and see various jobs in manufacturing and the degrees they require. They learn that employers are just as interested in the attitude they possess. That's what it takes to stand out from other qualified candidates.





Accuracy: Irrigation Design Software and Google Earth

Ben van den Heever will be presenting one of the Technical (Agriculture) Sessions after the close of the IA show in San Diego. If you are attending this year's show, plan to stick around to hear the session that begins at 2:00 p.m. Tuesday, November 8th.

The topic is "Accuracy: Irrigation Design Software and Google Earth." With modern technology and software programs, designing an irrigation project should be feasible, accurate and comprehensive. Many factors can affect the accuracy of the design. Working with incorrect topographical elevations should not be one of them. With the software tools at the disposal of the modern irrigation designer, no design should be done without incorporating the correct topographical elevations.

"Be the Santa in You"

Senninger is looking forward to sharing messages from Santa this Christmas season on our website. Beginning December 1st through December 25th, Santa's daily wisdom comes from his heart to yours. We hope you will be encouraged to "be the Santa in you" spreading joy and love to those around you. The project comes from Santa's own Media Company, KRS Media Group & KRIS the Foundation, a nonprofit organization, benefiting orphaned and disadvantaged children around the world. The link to each message will be found in the center of our Home Page.





16220 E. Highway 50
Clermont, FL 34711 USA

FIRST CLASS
U.S. POSTAGE
- PAID -
PERMIT # 4190
ORLANDO, FL

**FIRST CLASS
MAIL**

trade shows

Come See Us!

November 6
Irrigation Show
(Irrigation Association)
San Diego, CA

November 28
SE Vegetable
& Fruit Grower Expo
Myrtle Beach, SC

November 29
Amarillo Farm
and Ranch Show
Amarillo, TX

December 6
Great Lakes Fruit, Veg
& Farm Mkt Expo
Grand Rapids, MI

December 11
Western Alfalfa
& Forage Conference
Las Vegas, NV

December 15
Houston Gulf Coast
Irrigation Association
Houston, TX

January 11
Mid Atlantic Nursery
Trade Show (MANTS)
Baltimore, MD

January 11
Northeast Nebraska Farm
& Equip Show
Norfolk, NE

January 19
Green & Growin' Trade Show
Greensborough, NC

January 18
Idaho Potato Conference
Pocatello, ID

January 19
Gulf States
Horticultural Expo
Mobile, AL

January 22
Valley
National Dealer Meeting
San Diego, CA

January 24
Empire State Fruit
& Vegetable
Syracuse, NY

January 24
Western Idaho Ag
Caldwell, ID

January 25
Washington Oregon
Potato Conference
Kennewick, WA



CORPORATE HEADQUARTERS
16220 E. Highway 50
Clermont, FL 34711 USA

Phone: 407-877-5655
Fax: 407-905-8249
Int'l Fax: 407-905-8239
Web: www.senninger.com
E-mail: info@senninger.com

BRANCH OFFICES:

Grand Island, NE:
Phone: 308-381-8558
Fax: 308-398-2258

Lubbock, TX:
Phone: 806-793-3010
Fax: 806-793-0462

Holambra, Brazil:
Phone: 011-55-19-3802-1917
Fax: 011-55-19-3802-4764