

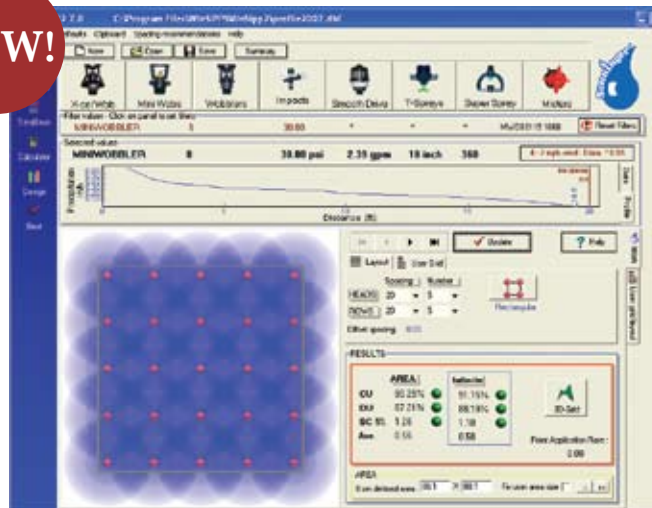
WinSIPP2™ [Software

Use WinSIPP2 software by Senninger to calculate the precipitation rate of your irrigation system.

NEW!

FEATURES:

- Aids in the selection and application of best irrigation products
- Tests the application uniformity of sprinkler layouts before the system is installed
- Compares different spacings, sprinkler models, nozzle sizes, and operating pressures to determine which would be best for your specific application



Densograms illustrate the uniformity of a given profile to show water distribution of multiple overlapping devices in graphic form.

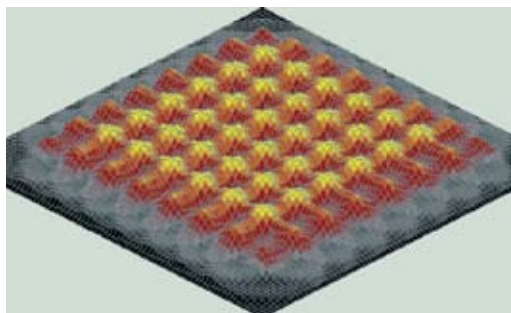
Ask for this program by contacting the Senninger Technical Support Department.

DISTRIBUTION PROFILE

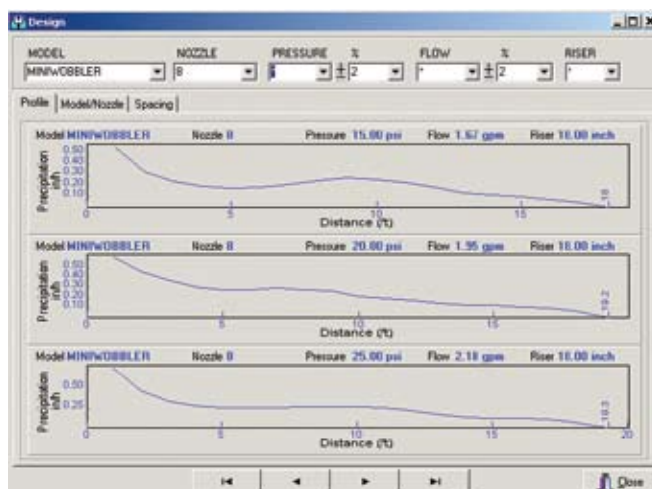
A distribution profile is the illustration of results from "catch can" tests performed in accordance with the American Society of Agricultural and Biological Engineers (ASABE) standard S398.1. This data shows how uniformly a device distributes water within its diameter of throw. WinSIPP utilizes the numerous distribution profiles available for Senninger products.

DENSOGRAMS

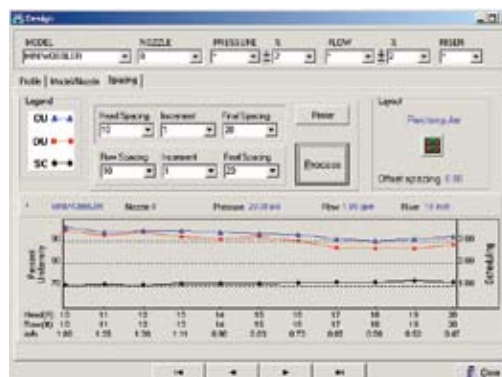
Data from distribution profiles is used to create densograms based on spacing dimensions, layout, and riser height. Densograms are useful in illustrating the uniformity in which water is distributed by multiple overlapping devices.



Graphics illustrate the water application pattern in 3-D format.



Sprinkler profile takes specific data and illustrates the amount of water that would be delivered at various intervals as well as the exact radius.



The WinSIPP2 program provides profiles illustrating the coefficient of uniformity, distribution uniformity, and the scheduling coefficient to determine which spacing would be optimum.